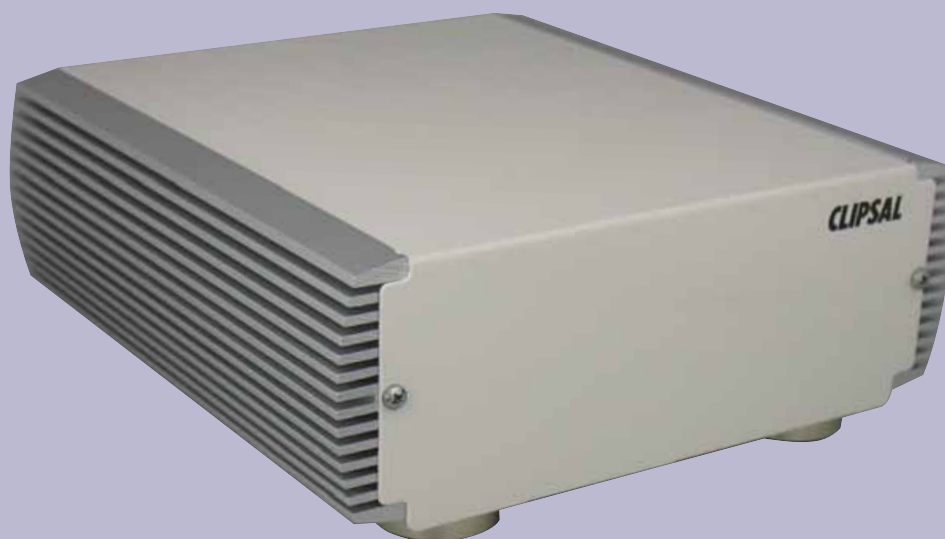


# Multi Room Audio Remote Amplifier

**560125R**

The Multi Room Audio (MRA) Remote Amplifier is used as part of a C-Bus enabled audio distribution system. It provides audio which is controllable via C-Bus wall switches and other C-Bus devices such as the C-Touch Colour Touch Screen.

MRA Remote Amplifiers are typically used in conjunction with the MRA Matrix Switcher. A Matrix Switcher distributes audio from multiple sources (such as radio, TV and CD player) to up to eight zones (a zone consists of one or more MRA Amplifiers).

When the Amplifier is used in conjunction with a Multi Room Audio Matrix Switcher, each zone (equipped with one or more Amplifiers) has control over which source it receives.

Remote Amplifiers can also be used without a Matrix Switcher. In this case a Distribution Unit is used to distribute audio from a single source (such as a radio) to one or more MRA Amplifiers.

In addition to the distributed audio, each MRA Amplifier accepts a local audio source (local input). This allows you to connect audio from a source such as a PC or portable audio player, which will be available to the specific amplifier only. Amplifiers also have volume controlled line level audio outputs (ZONE OUT), which can be connected to other audio equipment.

Audio distribution is performed via digital connection to maintain audio quality. The amplifiers may be located up to 45 metres from the Matrix Switcher.

Since Cat-5 cable may be used for several purposes within the same installation, it is recommended you use green cable for digital audio connections, pink for C-Bus and blue for Ethernet.

The Multi Room Audio Remote Amplifier incorporates both a software selectable C-Bus system clock and a software selectable network burden. The system clock is used to synchronise data communication over a C-Bus network, and for the network burden to be enabled, the system clock must also be enabled.

Multi Room Audio Amplifiers draw 22mA from the C-Bus network.

[clipsal.com/cis](http://clipsal.com/cis)

## Multi Room Audio Remote Amplifier 560125R

- Fully digital, noise free audio reproduction
- "LOCAL IN" for connection to local music player or PC
- "ZONE OUT" for connection to other audio equipment
- Cat 5 RJ45 sockets for connection to C-Bus network
- Reticulated IR support
- Draws 22mA from the C-Bus network
- Incorporates both a network burden and C-Bus system clock (software selectable)
- Frequency response: 40Hz to 20kHz ( $\pm 1$ dB)
- Supply voltage: 27 VDC (powered by matrix switcher via audio connection) and /or 24VDC@3.75A (via external switch mode power supply) or 21VAC@3.5A (via external linear power supply)
- C-Bus supply voltage: 15-36VDC@22mA
- Power consumption: 90W maximum
- Maximum power output: 28W RMS into 4 $\Omega$ (0.514%THD)
- Dimensions: W=175.0mm, H=70.8mm, D=211.5mm
- Weight: 1.6kg.

### Product of Clipsal Australia Pty. Ltd.

A member of the Schneider Electric Group.

#### Head Office

12 Park Terrace, Bowden  
South Australia 5007  
PO Box 103 Hindmarsh  
South Australia 5007

Telephone +61 8 8345 9500  
Facsimile +61 8 8346 0845  
Internet www.clipsal.com/cis  
E-Mail cis@clipsal.com.au

#### CIS Technical Support Hotline:

1300 722 247

#### Customer Service Enquiries:

**1300 2025 25**

#### National Customer Service Facsimile:

**1300 2025 56**

#### International Enquiries

#### International Sales and Marketing

Telephone +61 8 8269 0587  
Facsimile +61 8 8340 7350  
E-Mail export@clipsal.com.au

#### New Zealand

Clipsal Industries (NZ) Ltd  
Telephone +64 9 576 3403

#### Malaysia

Clipsal Integrated Systems (M) Sdn Bhd  
Telephone +60 3 7665 3555

#### Singapore

Clipsal Integrated Systems Pte Ltd  
Telephone +65 6415 3232/3233

#### China

Clipsal China Limited  
Telephone +86 755 8237 5959

#### Greece

Schneider Electric AE  
Telephone +30 69 4646 3200

#### Hong Kong

Clipsal Integrated Systems (HK) Limited  
Telephone +852 2487 0261

#### India

Schneider Electric India Pvt Ltd  
Telephone +91 11 5159 0000

#### Indonesia

PT Clipsal Graha Nusa  
Telephone +62 21 630 6430

#### Korea

Clipsal Korea Co. Ltd  
Telephone +82 549 5550

#### Pakistan

Clipsal Pakistan (Pvt) Ltd  
Telephone +92 21 506 7278

#### Philippines

Clipsal Philippines Inc.  
Telephone +632 683 0275-78

#### South Africa

Clipsal South Africa (Pty) Ltd  
Telephone +27 11 314 5200

#### Taiwan

Clipsal (Taiwan) Co Ltd  
Telephone +886 2 2558 3456

#### Thailand

Clipsal Thailand Ltd  
Telephone +66 2 952 5338-42

#### United Arab Emirates

Clipsal Middle East  
Telephone +971 6 5570 777

#### United Kingdom

Clipsal Integrated Systems  
C/o Schneider Electric  
Telephone +44 870 608 8 608

#### Vietnam

Clipsal - VTEC  
Telephone +848 856 3002



Clipsal Australia Pty Ltd reserves the right to change specifications, modify designs and discontinue items without incurring obligation and whilst every effort is made to ensure that descriptions, specifications and other information in this catalogue are correct, no warranty is given in respect thereof and the company shall not be liable for any error therein.

© Clipsal Australia Pty Ltd.

The identified trademarks and copyrights are the property of Clipsal Australia Pty Ltd unless otherwise noted.