

The 1 Door Access module is an economical one door, one card reader access module.

Supports Multiple Card Reader Formats

Configuration options allow for a broad range of card reader technologies.

Enterprise Level Access Control

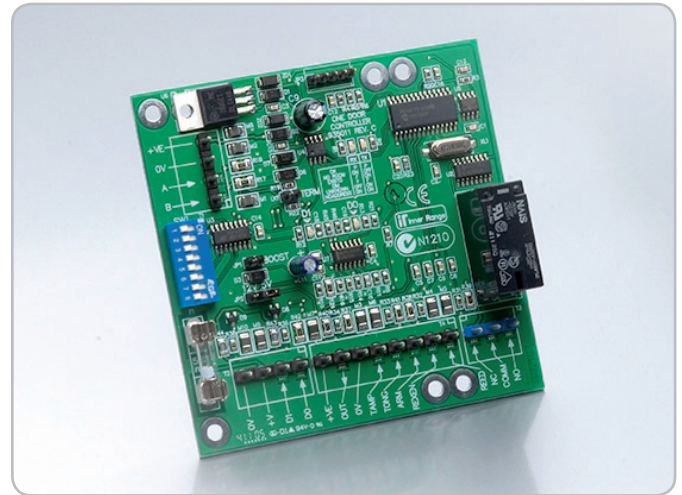
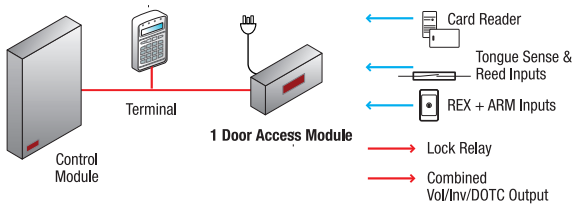
The 1 Door Access module fully supports the advanced Concept access control features: i.e. soft / hard / timed anti-passback, dual user, card and PIN, free access via timezones etc.

Features:

- Supports magnetic swipe or Wiegand card readers without the need for an additional interface
- Standard version supports offline database of up to 31 backup cards
- Provides reed and tongue sense monitoring
- Request to Enter (REN), Request to Exit (REX) & Arm inputs provided
- Door Open Too Long (DOTL), valid and invalid outputs
- On-board lock relay
- Fuse protection of Reader head power

Connectivity

The 1 Door Access Module is connected directly to the Concept 485 LAN. Up to 99 of the 1 Door Access modules may be installed in a single panel system.



SPECIFICATIONS

Physical

PCB Dimensions	95(L) x 95(W) (mm)
Installation Environment	0°C - 40°C @15 - 85% Relative humidity (non-condensing)

Electrical

Input Voltage to PCB	11-14V DC (Typically from separate power supply)
Operational Current	15mA
Max	25mA with lock relay active. (NOT including Reader or Auxiliary Out current)
Fuse Protection	500mA

Inputs

Zone Inputs	4 (May have predefined functions depending on programming options selected, i.e.: Door Reed, REX/REN, Tongue Sense and Arm button)
Reader Ports	1

Outputs

Relay	1 (Typically used for door locks)
Outputs (open collector)	1 (Typically used for Valid/Invalid indication)

Ordering options

995011PCB&K 1 Door Access Module