

## C-Bus Toolkit Connection Guide

For home owners with C-Bus home automation.



### OVERVIEW

This guide outlines the initial steps involved in Connecting to your C-Bus home automation network from your PC through Toolkit C-Bus software, so that you may start making basic programming changes to your C-Bus home automation system.

**WARNING:** Only people with a thorough understanding of how C-Bus works, or with close assistance from an experienced C-Bus Systems Integrator (or “C-Bus pointOne Professional”), should attempt any C-Bus home automation reprogramming. Some C-Bus programming changes may render aspects of your C-Bus home automation system unusable, lead to unreliable C-Bus operation, or may even prevent your entire C-Bus system from functioning at all - in which case you may need to pay for your C-Bus Systems Integrator to call out and attempt to restore functionality to your C-Bus home automation system.

### PROCEDURE

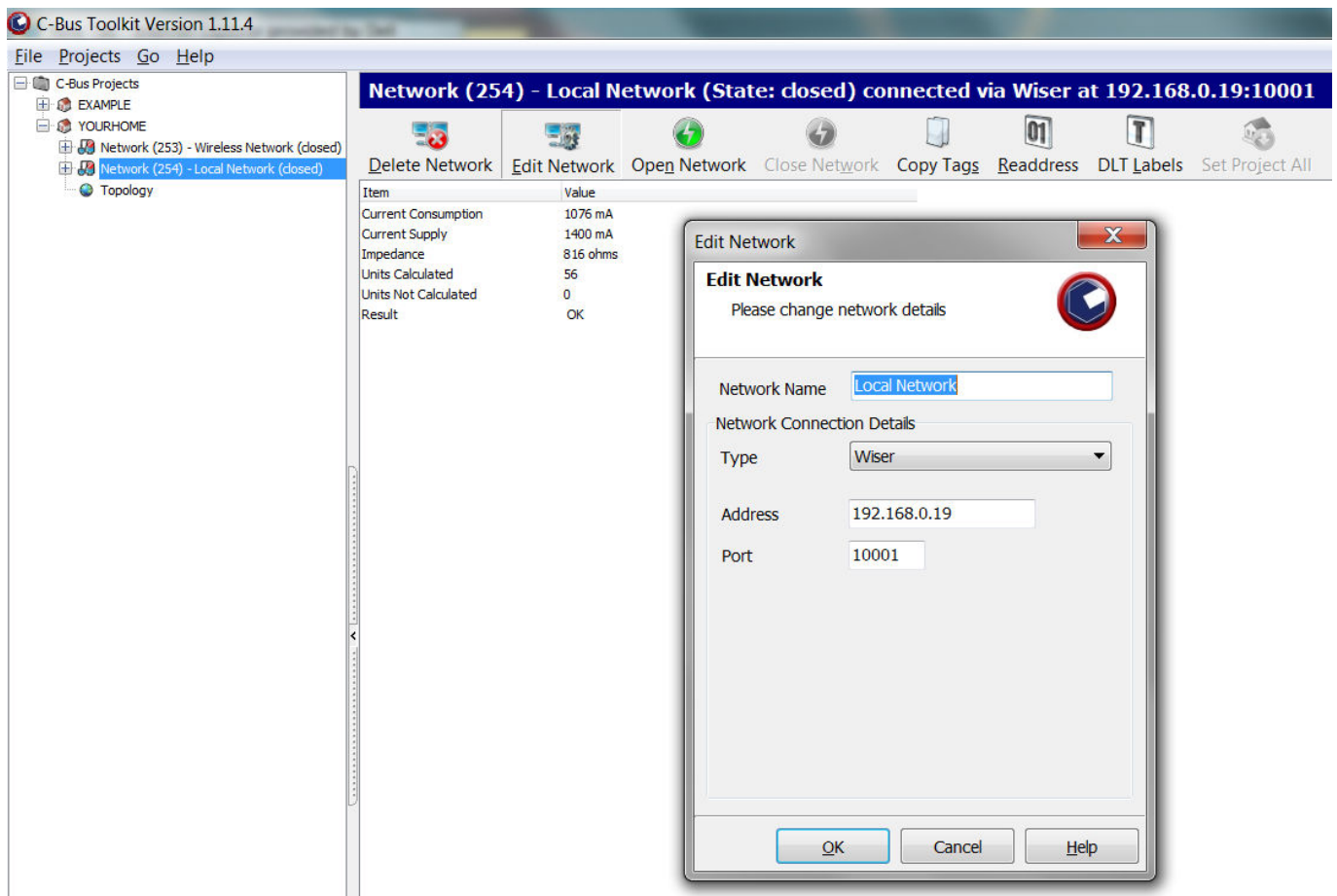
1. Visit the below website page and **download** the latest version of C-Bus Toolkit software to your Windows PC: <http://www.homeautomationaustralia.com/home-automation-free-software-downloads.shtml>
2. **Install** C-Bus Toolkit software on your Windows PC by running the above zip file and following the prompts.
3. **Obtain your C-Bus Toolkit Project File** from your C-Bus Systems Integrator. Current C-Bus Toolkit project files end with “.cbz”. Project files generated by older versions of C-Bus Toolkit software may end with “.cb3” or even “.cb2”. <sup>Note 1.</sup>
4. **Restore** your Project File into your installed C-Bus Toolkit program, if you do not still have a current copy of your C-Bus Database in your Toolkit, as follows:
  - **Open C-Bus Toolkit.**
  - **Restore your C-Bus project** file under “File” > “Restore Projects...”. Navigate to where your C-Bus project file is located and Open it.
  - **Look for your Project name** under “C-Bus Projects” in the left pane of the Toolkit Window. You may need to click on the “+” left of “C-Bus Projects” to reveal your Project name. (In the example below your project is named “YOURHOME”.)
5. **Physically connect** your Windows PC to your home C-Bus network by one of the following means: <sup>Note 2.</sup>
  - a) **LAN cable or wireless** LAN connection to your C-Bus Wiser, going through the usual steps to enable your Windows PC to connect to a wired or wireless LAN, or
  - b) **LAN cable** to your C-Bus CNI Network Interface, (but not the LAN connector on your large C-Bus Colour Touch Screen) or
  - c) **USB cable** to your C-Bus USB PC Interface, C-Bus PAC Pascal Automation Controller, C-Bus B&W MkII Touch Screen or C-Bus Colour Spectrum Touch Screen (behind front fascia on right side), or
  - d) **Serial RS232 cable** on your C-Bus Serial PC Interface, or C-Bus B&W MkI Touch Screen (on rear of touch screen, usually cabled to a nearby wall plate).

## C-Bus Toolkit Connection Guide

For home owners with C-Bus home automation.



6. **Software connect** your Windows PC to your home C-Bus network as follows:
- **Open C-Bus Toolkit** if it is not already Open.
  - **Reveal your C-Bus Network(s)** by clicking on the “+” left of your C-Bus Project name (e.g. “YOURHOME”) in the left pane under “C-Bus Projects” to expand it.
  - **Click on your local C-Bus Network**, which usually looks similar to “Network (254) – Local Network (**closed**)” (green bold emphasis added here only).
  - **Open the “Edit Network” dialog box** by
    - (a) clicking on the “Edit Network” Icon located at the top of the right pane in Toolkit, or
    - (b) alternate-clicking on your local C-Bus Network name and selecting “Edit Network”.
  - **Select the type of C-Bus interface** device through which you are physically connected to from your Windows PC, and then complete any additional information requested that is associated with this type of interface device. (See the example screen image below showing how to set up a Wiser LAN connection.)



- **Close** the “Edit Network” dialog box.
- **Open the connection** to your physical C-Bus network by
  - (a) clicking on the “Open Network” Icon along the top of the right pane in Toolkit, or
  - (b) alternate-clicking on your local C-Bus Network name and selecting “Open Network”.
- **Confirm that your connection is Open** by checking that your C-Bus Network details in the left Toolkit pane now read “Network (254) – Local Network (**running**)”



## 7. Scan your C-Bus network:

- **Click on the “+”** left of “Network (254) – Local Network (**running**)” to reveal “Units(xx)”, where “xx” is the number of C-Bus Units in your project file (i.e. your Database).
- **Reveal the C-Bus units** in your project file (database) in a line-by-line list by clicking on “Units(xx)” to reveal a screen like that below. You will see a line summary of all of the C-Bus “Units in Database” in your computer for your C-Bus system in the upper pane.
- **Observe** the (as yet un-scanned) empty space for the C-Bus “Units on Network” in the lower pane.

**Units in Database (53) - YOURHOME**

Unit Type	Serial No.	Address	Part Name	Tag Name	Category	Exists on Network	Prim Application	Sec Application	Firmware
PCINT4 - DIN Rail PC Interface	001005362279	001	SECURITY	SECURITY	Support Units - PC I...	No	N/A	N/A	5.4.00
KEYM8 - 8 Gang NEO Key Input Unit	001004831350	005	BED INCB	BED INCB	Input Units - Neo	No	Lighting	Unused	2.2.00
SENTEMPB - Temperature Sensor	001006072846	006	OSRUMPUS	OSRUMPUS	Input Units - Sensors	No	Temperature Broa...	N/A	2.6.00
RELDN12 - DIN Rail 12 Channel Voltag...	001005631154	010	N_GAMES	N_GAMES	Output Units - Relays	No	Lighting	N/A	1.6.00
RELDN12 - DIN Rail 12 Channel Voltag...	001005631095	011	N_OFFICE	N_OFFICE	Output Units - Relays	No	Lighting	N/A	1.6.00
RELDN12 - DIN Rail 12 Channel Voltag...	001005444057	012	N_ENTRY	N_ENTRY	Output Units - Relays	No	Lighting	N/A	1.6.00
RELDN12 - DIN Rail 12 Channel Voltag...	001005631029	013	N_OUTSD	N_OUTSD	Output Units - Relays	No	Lighting	N/A	1.6.00
RELDN12 - DIN Rail 12 Channel Voltag...	001005631066	014	S_RUMPUS	S_RUMPUS	Output Units - Relays	No	Lighting	N/A	1.6.00
RELDN12 - DIN Rail 12 Channel Voltag...	001005633919	015	S_BED3	S_BED3	Output Units - Relays	No	Lighting	N/A	1.6.00
RELDN12 - DIN Rail 12 Channel Voltag...	001005443995	016	S_MISC	S_MISC	Output Units - Relays	No	Lighting	N/A	1.6.00
DIMDU4 - DIN Rail 4 Channel Universa...	001005754054	020	N_GAMES	N_GAMES	Output Units - Dimmers	No	Lighting	N/A	1.6.00
DIMDU4 - DIN Rail 4 Channel Universa...	001005753680	021	N_WC	N_WC	Output Units - Dimmers	No	Lighting	N/A	1.6.00
DIMDU4 - DIN Rail 4 Channel Universa...	001005613986	022	N_ENTRY	N_ENTRY	Output Units - Dimmers	No	Lighting	N/A	1.6.00
DIMDU4 - DIN Rail 4 Channel Universa...	001005754045	023	N_NEW	N_NEW	Output Units - Dimmers	No	Lighting	N/A	1.6.00
DIMDU4 - DIN Rail 4 Channel Universa...	001005753482	025	S_ENS	S_ENS	Output Units - Dimmers	No	Lighting	N/A	1.6.00
DIMDU4 - DIN Rail 4 Channel Universa...	001005753635	026	S_BED1	S_BED1	Output Units - Dimmers	No	Lighting	N/A	1.6.00
DIMDU4 - DIN Rail 4 Channel Universa...	001005753852	027	S_RUMPUS	S_RUMPUS	Output Units - Dimmers	No	Lighting	N/A	1.6.00
PC_CTD - C-Touch Spectrum Colour T...	001005510999	030	RUMPUS	RUMPUS	Support Units - PC I...	No	N/A	N/A	5.4.00
PC_CTD - C-Touch Spectrum Colour T...	001005510996	031	BED1	BED1	Support Units - PC I...	No	N/A	N/A	5.4.00
PC_CTD - C-Touch Spectrum Colour T...	001005510994	032	LOUNGE	LOUNGE	Support Units - PC I...	No	N/A	N/A	5.4.00
PC_CTD - C-Touch Spectrum Colour T...	001005510601	033	LIVING	LIVING	Support Units - PC I...	No	N/A	N/A	5.4.00
PC_CTD - C-Touch Spectrum Colour T...	001005510997	034	OFFICE	OFFICE	Support Units - PC I...	No	N/A	N/A	5.4.00
PC_CTD - C-Touch Spectrum Colour T...	001005510600	035	GAMES	GAMES	Support Units - PC I...	No	N/A	N/A	5.4.00

**Units on Network (1) - Quick**

Unit Type	Serial No.	Address	Part Name	Exists in Database	Prim Application	Sec Application	Firmware	Voltage

### - Scan your physical C-Bus Network by

- (a) clicking the “Scan Network” Icon located at the top left corner of the lower pane, or
- (b) alternate-clicking on “Units(xx)” in the left pane and selecting “Scan Network”.

- **Observe** in the lower right pane as Toolkit first checks for any duplicate Units on your network (i.e. C-Bus Units that have the same Unit Address and subsequently have to then be unraveled until they all have unique Unit Addresses), and then progressively uploads Unit information from each C-Bus unit actually found on your physical C-Bus Network. Be patient, as this may take a minute or more to complete, especially for C-Bus networks with a large number of C-Bus units installed on them. If your first attempt to scan your C-Bus network fails, try to rescan your C-Bus network one or two or more times.

## 8. To reprogram a C-Bus Unit:

- **Open a Dialog Box for the C-Bus Unit** that you wish to reprogram by clicking on the line for that C-Bus Unit in the lower “Units on Network” pane. (This is slower than clicking on the line for the C-Bus Unit in the upper “Units in Database” pane, but has the advantage that you know you are looking at how that C-Bus unit is actually programmed now.)
- **Make the programming changes** you wish to that C-Bus Unit using its Dialog Box. Home owners will initially be most interested in changing how long C-Bus PIRs leave automatically operated lights on, or their ramp off rate, or individual wall switch functions.
- **Apply programming changes** by clicking “OK” (which applies and then closes the

## C-Bus Toolkit Connection Guide

For home owners with C-Bus home automation.



Dialog Box) or “APPLY” (which applies the change and leaves the Dialog Box open) near the bottom right of the Dialog Box, and click “Save to Physical Unit” to ensure that these changes are sent to the physical C-Bus Unit. Also tick “Save to Database” if you want to also save your changes to your Database on your PC in Toolkit (which is normally the case where you want to keep your Database up-to-date with your Network).

### 9. To finish up:

- **Click** on your C-Bus Project name (e.g. “YOURHOME (Open Networks)” in the left pane.
- **Close your connection** by
  - (a) clicking on the “Close All Networks” Icon located at the top of the right pane, or
  - (b) alternate-clicking your C-Bus Project name and selecting “Close All Networks”.
- **Confirm** that something like “Network (254) – Local Network (**closed**)” appears below your project name in the left pane, and that the “(Open Networks)” disappears from beside your C-Bus Project name in the left pane.
- **Make a new backup of your C-Bus project** file by
  - (a) clicking on the “Backup Project” Icon located at the top of the right pane, or
  - (b) alternate-clicking your C-Bus Project name and selecting “Backup Project”.
 This will save an updated copy of your Database as a “.cbz” project file in the directory that you specify, automatically appending the current time and date to the cbz filename to make it easy to create a succession of uniquely named project files. (Keeping such a succession of project files is a good idea, because it may make it easier for you to restore your C-Bus programming back to a previous state.)
- **Close Toolkit.**
- **Disconnect the cable** you have used to connect your Windows PC to your C-Bus Interface device (unless you used a wireless Wiser WiFi connection).

You may find and download further home automation information, brochures, data sheets, user manuals, installation manuals and home automation FAQs from the following website pages on the Clever Home automation website:

<http://www.cleverhome.com.au>

<http://www.cleverhome.com.au/FAQ-frequently-asked-home-automation-questions.shtml>

<http://www.cleverhome.com.au/products/home-automation-user-manuals.shtml>

<http://www.cleverhome.com.au/products/manuals.html>

### NOTES.

**Note 1.** To Restore an old “.cb2” project file into a current Version of Toolkit (Toolkit3), you will first need to:

- Restore your “.cb2” project file into an installed Toolkit2 Version 2.7.10, then;
- Import your project file from Toolkit2 2.7.10 into an installed Version 1.10.9 of Toolkit3 (which is the latest version of Toolkit3 to support Importing of Toolkit2 projects), then;
- install the latest version of Toolkit3.

**Note 2.** When connecting from your Windows PC to your home C-Bus Network using Toolkit software through a C-Bus Touch screen, PAC Pascal Automation Controller, or a Wiser Home Controller, all of these devices will temporarily cease their normal operation while acting as a PC Interface to your C-Bus. When you close your connection, they will resume normal operation.