

## Smoke Alarm

### Installation and Operating Instructions & Warranty

**755**

**240V a.c. smoke alarm with 9V battery back-up**  
Suitable for single use or interconnection of  
up to 12 alarms

Tested and passed to AS3786



**IMPORTANT  
PLEASE LEAVE THIS MANUAL WITH  
THE OWNER**

**Product of Gerard Industries Pty Ltd**

ACN 007 873 529

12 Park Terrace, Bowden, South Australia 5007

Telephone: (08) 269 0511. Offices in all States

Thank you for purchasing a quality Clipsal 755 Smoke Alarm. The 755 is a mains powered smoke alarm, with a battery back-up that will operate in the event a mains power failure. The alarm will sound when invisible smoke produced at the start of a fire enters the unit's ionization chamber. This unit is not designed to detect heat or flame. A 5 year warranty (excluding batteries) is included.

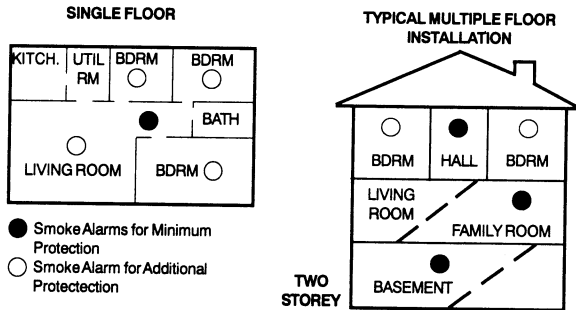
Please read the following instructions carefully to ensure correct installation and maintenance.

Installation of the Clipsal 755 Smoke Alarm must be carried out by a licensed electrician or similarly qualified person to SA Wiring Rules (AS3000) and relevant Building Codes.

All ionization smoke alarms use an extremely small amount of radioactive element in their ionization chambers. Never try to repair or dispose of the unit yourself. Return it to the supplier for repairs or safe disposal. It is illegal to send products containing radioactivity through Australia Post. Check for similar conditions with any other forwarding agency before sending this product to the supplier.

**RECOMMENDED LOCATIONS OF ALARMS**

The Clipsal 755 Smoke Alarm is a domestic unit designed to be mounted on ceilings in single or multi-storey residential dwellings, such as houses, home units and apartments. If the alarm cannot be installed on the ceiling, wall mounting is acceptable in most instances. Recommended locations are as follows:



As a record of purchase, please fill out the following details and file this information with your purchase invoice.

**Clipsal 755 Smoke Alarm**

Serial Alarm \_\_\_\_\_

Purchased From \_\_\_\_\_

Date of Purchase \_\_\_\_\_



**Product of Gerard Industries Pty Ltd**

ACN 007 873 529

**Head Office**

12 Park Terrace, Bowden, South Australia 5007  
 Telephone (08) 269 0511 Facsimile (08) 340 1724

Registered offices in all states:

- New South Wales (02) 794 9200
- Victoria (03) 207 3200
- Queensland (07) 267 8044
- South Australia (08) 269 0555
- Western Australia (09) 249 4333
- Northern Territory (089) 47 0278
- Tasmania (003) 31 6951

specified in the ratings label.

4. The manufacturer does not accept liability for any direct or consequential damage, loss or other expense arising from misuse or incorrect installation and operation of this product.
5. Warranty will only be given on products with proof of purchase date e.g. original invoice.
6. This warranty does not extend to cover batteries or any faults caused by batteries when incorrectly installed, leaking or otherwise installed in non accordance with manufacturer's directions.

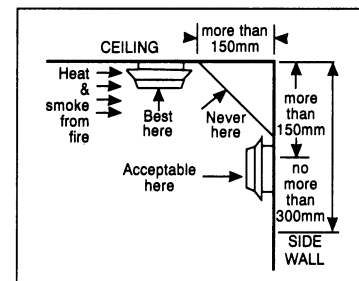
**Note:** It is illegal to send radioactive material through Australia Post. Check for similar conditions with any forwarding agency before sending this product.

### WHAT TO DO IF THE ALARM SOUNDS

1. Leave immediately, following your family's escape plan.
2. As you leave, don't open any inside doors without first feeling its surface. If the door is hot, or if you see smoke coming through the cracks, do not open the door. Use an alternative exit.
3. If the inside of the door is cool, place your shoulder against it, open it slightly and be ready to slam it shut if heat and smoke rush in.
4. If the air is smoky, stay as close to the floor as possible.
5. Breathe shallowly through a cloth, which if possible should be wet.
6. Once outside, go to your pre-selected assembly area and make sure everyone else is there.
7. Call the Fire Service from a neighbour's home - never from your own.
8. Do not return to your home until fire officials give you permission to do so.

**For further information on fire safety, contact your local Fire Service.**

- Install at least one smoke alarm on each level or storey of a multi-storey dwelling.
- A smoke alarm should be installed in the immediate vicinity of the bedrooms. If there is more than one sleeping area, locate additional alarms in the immediate vicinity of each of these areas.
- Sleeping areas are often located furthest from the exits of a house. Therefore, smoke alarms should be installed on all exit routes from bedrooms.
- A smoke alarm should be installed inside every room in which a smoker sleeps and inside any room where a person sleeps with the door closed.
- A closed door can stop smoke easily reaching the alarm and can prevent the occupant hearing the alarm sounding.
- Install additional alarms in hallways that are longer than 9 metres.
- Smoke alarms should preferably be mounted on the ceiling, not less than 600mm from any corner.
- If the alarm is to be mounted on a wall, install it not less than 150mm and not more than 300mm from the ceiling and no closer than 600mm from any corner.



### LOCATIONS TO AVOID

Installing a smoke alarm in an unsuitable location creates two main problems.

1. Obstructions can prevent the alarm from giving early warning in the event of a fire.
2. Its location may lead to nuisance (false) alarms.

To avoid these situations, Clipsal 755 Smoke Alarms should not be installed in any of the following locations:

- The garage. Combustible products are present in the air when you start and run your vehicle's engine.
- In front of forced air movement from air-conditioners, heaters, fans, etc.
- In dead air spaces where early smoke may not enter. e.g. upper sections of sloping or 'A' frame ceilings or exposed ceiling beams, where air does not circulate.
- In dusty areas. Dust may cause a smoke alarm to false alarm or even fail to alarm.
- In spray painting areas.
- In areas where temperatures may fall below 5°C or rise above 45°C.
- In or near very humid areas such as bathrooms. Moisture can cause false alarms.
- Near hot water heaters, space heaters or fireplaces.
- In any area that attracts insects. Some lights attracts insects, particularly fluorescent and mercury vapour lamps.
- Near any protrusions that may prevent smoke spreading quickly to the alarm.

#### **LOCATING A SMOKE ALARM IN A MOBILE HOME**

- If installing a smoke alarm in a mobile home built since 1978, follow the recommended locations as detailed above.
- Many mobile homes built before 1978 are not well insulated, enabling extreme heat or cold to be transferred from outside the home through the walls and roof. This may create a thermal barrier which can prevent smoke from reaching a smoke alarm mounted on the ceiling. If this situation exists, install the smoke alarm on an inside partition between 150mm and 300mm from the ceiling.
- If you are not sure about insulation in a mobile home, or if you notice the walls and ceilings are either hot or cold, install the alarm on an inside wall. For minimum protection, install one alarm close to the sleeping areas. For additional protection, refer to the single floor plan above.
- In mobile homes, it is particularly important to install smoke alarms as far away as possible from cooking areas to reduce the potential for nuisance alarms.
- Other areas to avoid are listed above in Locations to Avoid.

#### **BUILT-IN HUSH CONTROL**

**WARNING:** Before using the alarm's Hush feature, fully identify the source of the smoke and make certain that the area is safe.

#### **DEVELOPING AN ESCAPE PLAN**

A mains powered smoke alarm with battery back-up, correctly installed and maintained is the most effective way of giving your family early warning of a fire.

Other precautions are to reduce the risks of a fire starting in your home and to develop a fire escape plan with all family members.

Here are some suggestions for developing your escape plan:

1. Make a floor plan which clearly indicates all doors and windows in your home and at least two escape routes from each room. Multi-storey dwellings require special attention. For instance, upper storey windows may need a chain ladder or other fire stairway as a means of exit.
2. Determine a place outside your home (e.g. the letter box or front fence) where all family members can assemble if a fire occurs.
3. Discuss your escape plan with all members of your family. Show everyone, particularly young children, what to do in case of a fire.
4. Make sure all family members are familiar with the sound of the smoke alarm.
5. At least every six months, sound the alarm and practice your family's fire drill.

#### **Remember:**

In the event of a fire, you may not be able to reach your children. Therefore, it is important for all family members, including small children to know exactly what to do.

#### **WARRANTY**

The benefits conferred by this warranty are in addition to all other rights and remedies in respect of the product which the consumer has under the Trade Practices Act and similar State and Territory Laws.

The original purchaser of this Clipsal 755 Smoke Alarm is provided with the following warranty and subject to the following conditions. Gerard Industries Pty Ltd warrant this product for a period of 5 years from the date of purchase for all parts defective in workmanship or materials. All defective parts will be replaced free or charge. The following exclusions do not preclude the purchaser from those statutory rights consumers have under the Trade Practices Act and similar State and Territory Laws.

#### **WARRANTY CONDITIONS**

1. This warranty is only valid for products installed according to the manufacturer's instructions.
2. This product must not be modified or changed in any way.
3. All wiring must be carried out by a licensed electrician or similarly qualified person and must be connected to the voltage requirements as

- may damage the unit and void the warranty.
- Never use an open flame of any type to test your alarm. You may damage the alarm or set fire to your home. Operating the TEST button will check for correct functioning.

### **MAINTENANCE AND CLEANING**

- Ensure that the battery is renewed at least once a year.
- The Clipsal 755 Smoke Alarm is virtually maintenance free. However, vacuuming the unit at least once every six months will remove dust.
- Wipe the enclosure clean with a water moistened cloth . Do not immerse this unit or use household cleaners. Do not apply paint or spray with any liquid.

### **REPAIRS AND SERVICE**

This smoke alarm has no user serviceable parts. Dangerous voltages are contained within, so do not attempt to repair to this unit yourself. Instead, this smoke alarm should be returned to the supplier for service or disposal. Never send this unit through the post.

### **LIMITATIONS OF SMOKE ALARMS**

When installed and maintained correctly, smoke alarms are an excellent and inexpensive way of providing your family with an early warning of possible fires. It must be remembered, however, that smoke alarms do have their limitations and that this product should not be a substitute for basic safety precautions and fire prevention.

- Smoke alarms cannot provide an alarm if smoke does not reach the unit. It may not sense a fire that is on the other side of a closed door, or fires that start in chimneys, walls, ceilings, roofs, or on another storey.
- Alarms located outside bedrooms, on the other side of a closed door may not wake a sound sleeper.
- Smoke alarms must be tested regularly to ensure that batteries and alarm circuits are in good condition. A smoke alarm with a flat or missing battery offers no protection in the event of a mains power failure.
- Smoke alarms do have a limited life and should be replaced after 10 years service.
- \*People with impaired hearing as advised to use special purpose smoke alarms that use flashing lights or vibrating devices to indication alarm conditions.

Nuisance sources such as kitchen cooking areas, can cause nuisance or false alarms. Built into the Clipsal 755 Smoke Alarm is a special Hush feature that lets you silence false alarms from nuisance sources.

### **Features**

- The Hush control will temporarily silence the alarm for approximately five minutes.
- After five minutes the unit will automatically revert to the fully alert mode.
- Very dense smoke will override the Hush control and sound the alarm.
- The Hush feature can be used repeatedly to silence the alarm until the air is cleared.
- This feature should be used only when a known condition (e.g. smoke from cooking) activates the alarm.
- To operate, push the HUSH button. The alarm will silence immediately and 'chirp' approximately every five seconds for the next five minutes. It will then automatically revert to the fully alert condition. If smoke particles are still present, the alarm will sound again.
- If interconnected alarms are installed, the unit that detects the smoke and sounds the alarm cannot be inadvertently silenced by the Hush button of other units. In this case all of the alarms will continue to sound for as long as smoke is detected or until the Hush button of the triggering alarm is pressed.

### **INSTALLATION**

The Clipsal 755 Smoke Alarm is a 240V a.c. unit with 9V battery back-up.

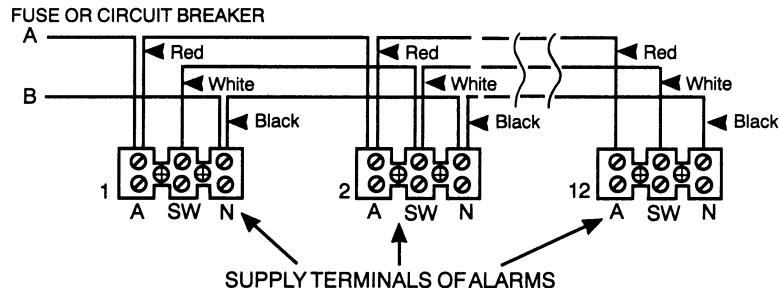
Unless a 9V d.c. battery is installed, disconnection of this unit from its mounting plate or loss of mains power will render this device inoperative.

This smoke alarm must be connected to a continuous 240V a.c. 50Hz supply which cannot be inadvertently switched off. Interconnected alarms must be wired on the same final sub-circuit.

### **WIRING INSTRUCTIONS**

- 240V a.c. installation must be carried out by a licensed electrician or similarly qualified person in accordance with the SA Wiring Rules. (AS3000)
- Do not conduct an insulation resistance test to any circuit with a 755 Smoke Alarms connected.
- It is important that the alarm is wired correctly and fitted with a 9V d.c. battery back-up to ensure correct operation.

## DIAGRAM OF ONE ALARM AND MULTIPLE ALARM WIRING



- Slide alarm off mounting base as indicated by arrows.
- Fix mounting plate in position.
- Connect circuit wiring to terminal block as set out in diagram and replace terminal cover.
- Connect 9V battery (included).
- Slide alarm onto mounting base until it snaps shut.
- Turn on power and check the green light on alarm cover. It should be lit when mains connected.
- Test alarm by pushing on TEST button in indicated location.

Connecting the switch wire terminal in any other way to that shown in this instruction may result in damage to the alarm, failure to operate or an electrical shock hazard. It will also void the warranty.

Ensure that the terminal cap is refitted to cover the terminals.

### BATTERY INSTALLATION AND REPLACEMENT

The Clipsal 755 Smoke Alarm uses one 9V d.c. battery which automatically provides back-up power for the alarm in the event of the mains power failing. A fresh battery will operate the alarm for approximately one to three months with a.c. power off.

This smoke alarm has a low/missing battery indicator which will 'chirp' at intervals of approximately 40 seconds for a minimum of 7 days. It is vital for your safety that you renew the battery when this occurs. An inactive alarm will not save lives.

Replace the battery with a new one at least once a year to ensure correct operation.

1. To replace the battery, gently slide the alarm in the direction shown by the arrow on the unit's cover and lower it on its hinge.
2. Remove the battery from compartment.
3. Connect a new battery and place it into the battery compartment.
4. Push the alarm onto the base and slide to secure in place, flush with the base plate.

Use only the following batteries as replacements:

- GP Alkacell G1604A-BP1
- Eveready 522
- Duracell 1604

**WARNING:** Using inferior batteries or the incorrect type may cause the alarm to malfunction. When replacing the battery and refitting the alarm to the mounting plate make sure that it is fully connected and flush with the mounting plate.

### OPERATION AND TESTING

- The Clipsal 755 Smoke Alarm is operational once all of the connections are correctly made, the 9V battery installed and mains power restored.
- Test the alarm by pushing the TEST button for a few seconds. The alarm should sound simultaneously.
- This test should be done at least once a month to ensure that the alarm is operating correctly.
- If interconnected alarms are installed, pushing the TEST button on one unit should cause all interconnected units to sound.
- If the alarm does not sound, check the wiring, 9V battery, fuses or circuit breaker and make sure that the alarm is connected to a 240V a.c. supply which cannot be inadvertently turned off.
- The green LED indicates that the unit is operating with a.c. power. If this LED is off, the a.c. power is off and the back-up battery will operate the unit.
- You will not be safeguarded if the a.c. power goes off and the unit is not fitted with a fresh battery.
- The red LED should flash once approximately every 40 seconds to indicate the unit is functioning and alert. It will flash rapidly when the unit goes into alarm. The flashing light and pulsating loud alarm will continue until the air is cleared.

For interconnected alarms, only the unit which senses smoke (or is being tested) will flash rapidly. All other units will sound their alarms but not flash rapidly.

### TEST WEEKLY

- Do not apply excessive force to either the TEST or HUSH button. Doing so